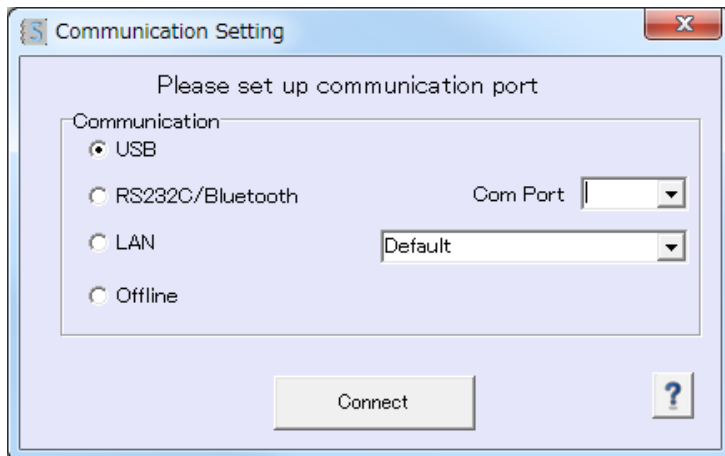


## Communication Settings

Menu → Settings → Communication

You have the possibility to operate MB2 controller by following communication method.



USB communication	Need installation the USB driver, please refer to section 1, how to install driver. If USB is unable to communicate, the USB circle button is off light.
RS232C / Bluetooth communication	RS232C communication Communicate by a straight cable (D-SUB 9 pins), please select a Com Port.
	Bluetooth wireless communication Enable to wireless communicate with installed Bluetooth PC or using Bluetooth adapter inserted into PC. Please refer to section 2, how to setup Bluetooth.
LAN communication	Use a cross cable if you direct communicate between MB2 controller and PC. Use a straight cable if you communicate through the HUB network. Please refer to section 3, how to setup LAN communication.

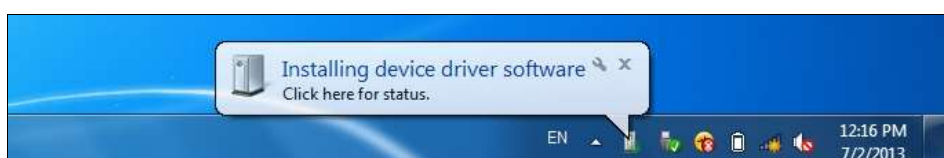
**Important : If a warning message appears during installation, click “Permission to Change (Yes)” and proceed with the installation.**

Note : The bellow screenshots are based on Windows 7. The screens must be different by using other windows OS.

### 1. Install USB driver

(1) Connect a USB cable between MB2 controller and PC, and turn to power ON the MB2 controller. Start plug-and-play automatically and the bellow messages should be appeared.

\*if you don't get these messages, skip to section (2).

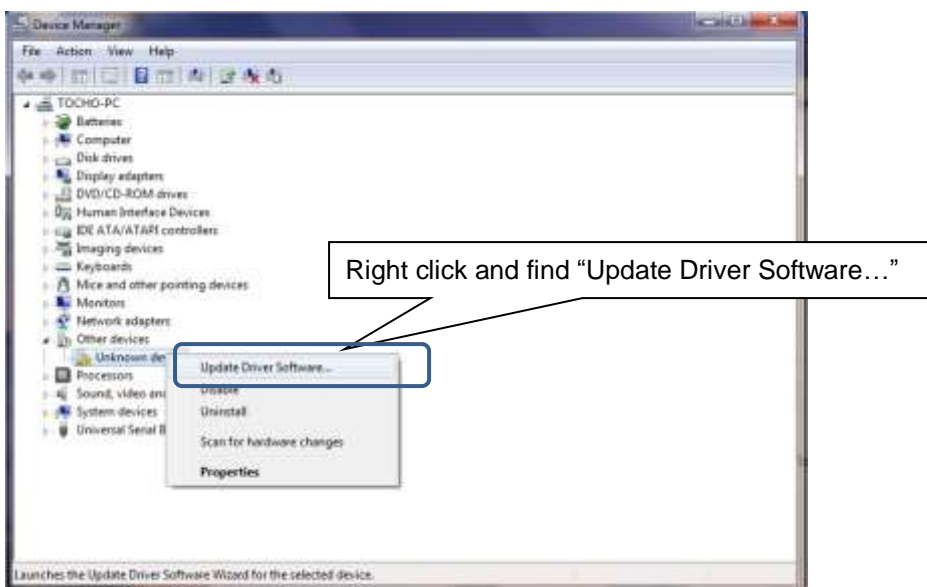




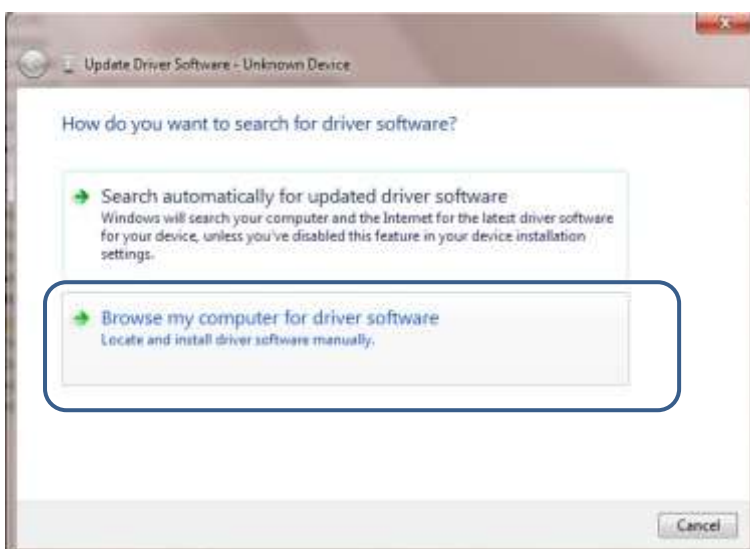
(2) Open "Device Manager" (from "Control Panel" → "System and Security" → "System").



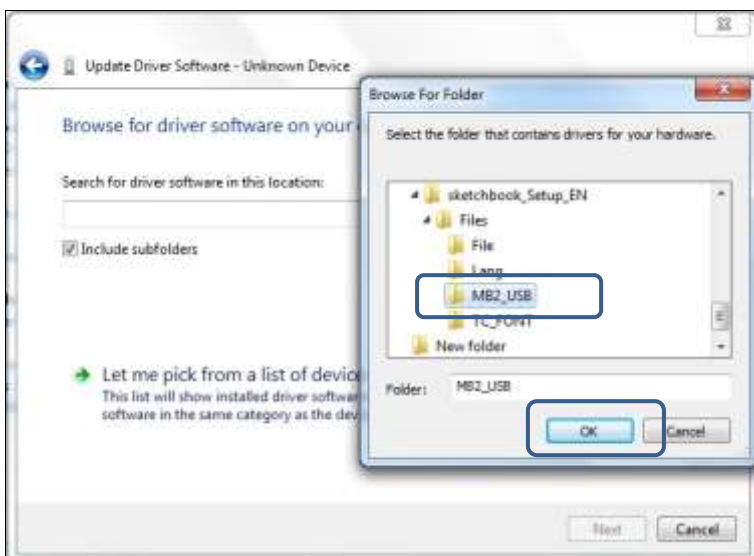
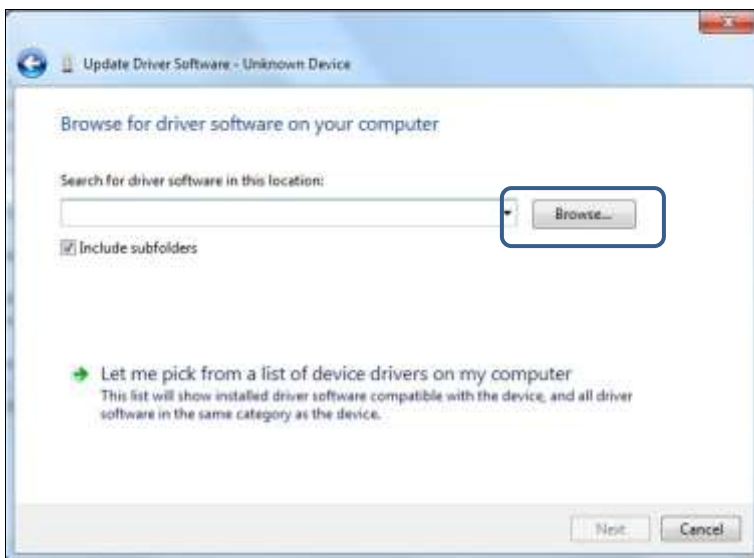
(3) Find "Unknown device" and right click, find "Update Driver Software..."



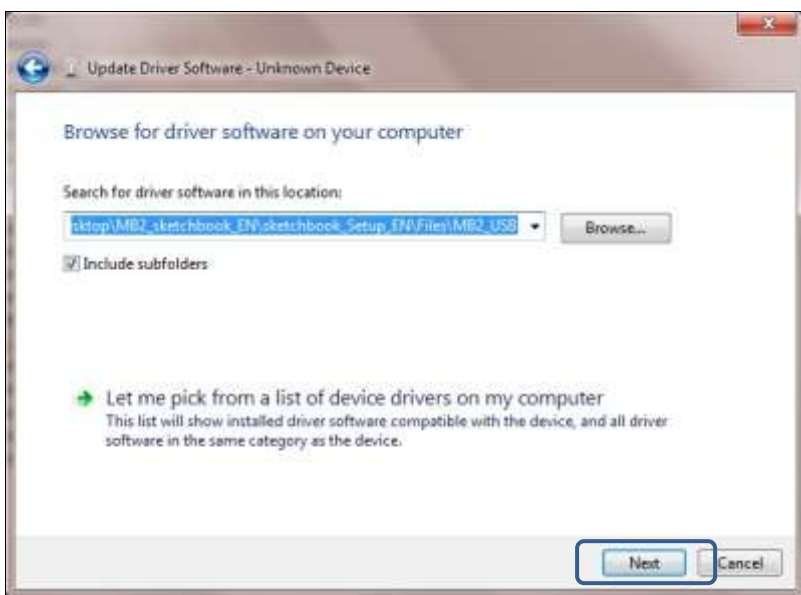
(4) Select "Browse my computer for driver software"



(5) By clicking **Browse...** button, select “**MB2\_USB**” folder under “**sketchbook\_Setup\_EN**” → “**Files**” in the packed CD.



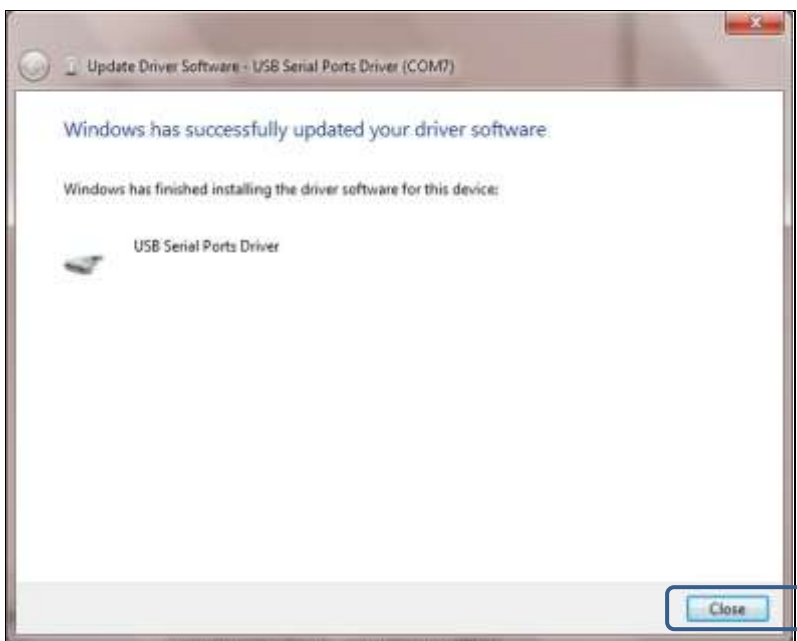
(6) Click **Next** button.



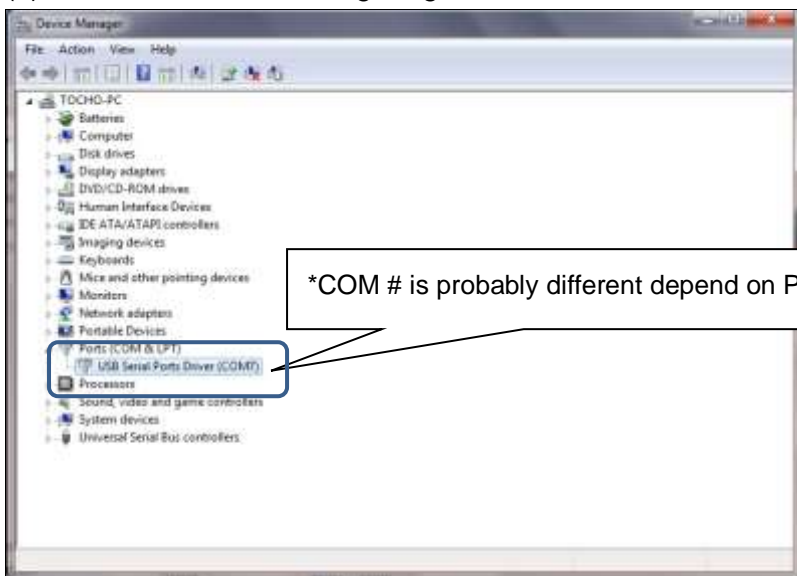
(7) If the warning message appears, select "Install this driver software anyway".



(8) Start installing. When the installation is complete, check the following box and click **Close** button.



(9) Check the device manager again whether the installation is successful.



## 2. Bluetooth setup

**Important : Bluetooth connection is required a PC with Bluetooth function. Please confirm if your PC has Bluetooth function before setup.**

**Important : The following setting method may be different from depend on PC or Bluetooth adapter. If it is different, please refer to your Bluetooth settings of the PC.**

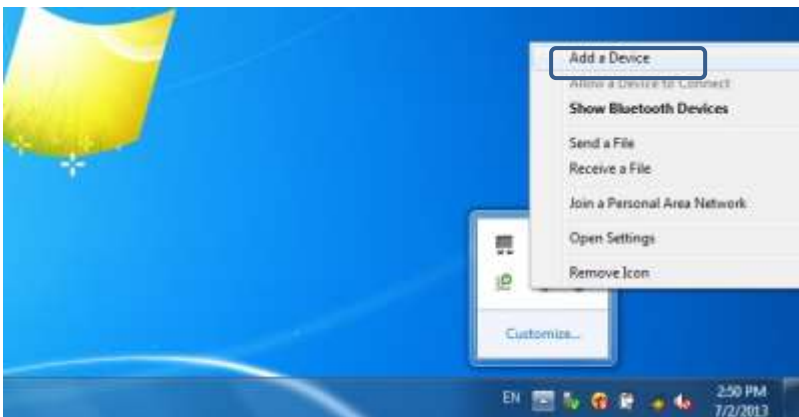
(1) Turn On the power of the MB2 controller first.

(2) Check the Bluetooth icon on the task bar.

If you do not find it, make a sure whether Bluetooth function is installed in the PC.



(3) By right clicking on the icon and select "Add a Device".

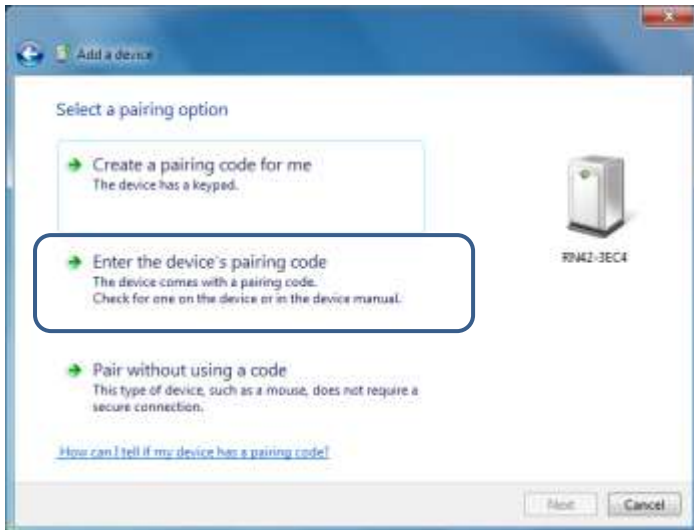


(4) Available Bluetooth devices show up and select the MB2 Bluetooth device (**RN42-XXXX**).

Click **Next** button.



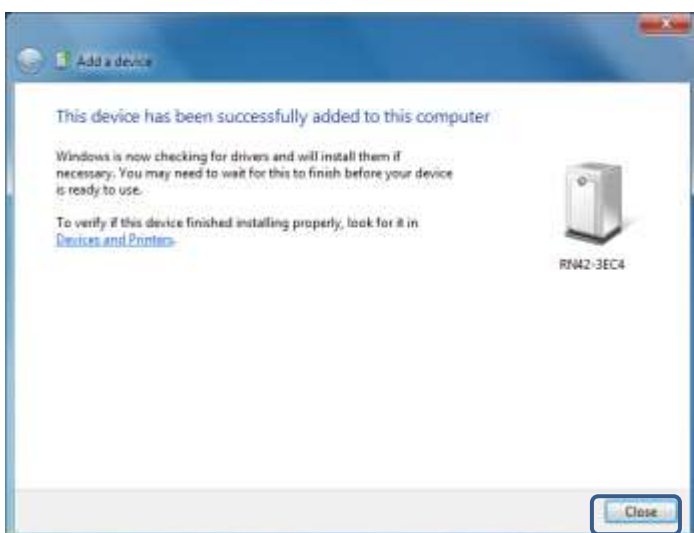
(5) Select “Enter the device’s pairing code”



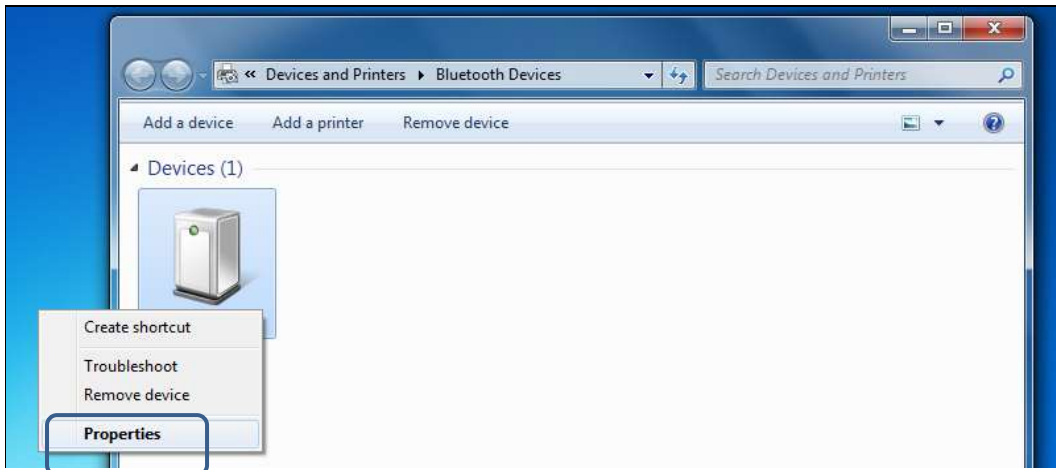
(6) Enter the pairing code “1234” for the device



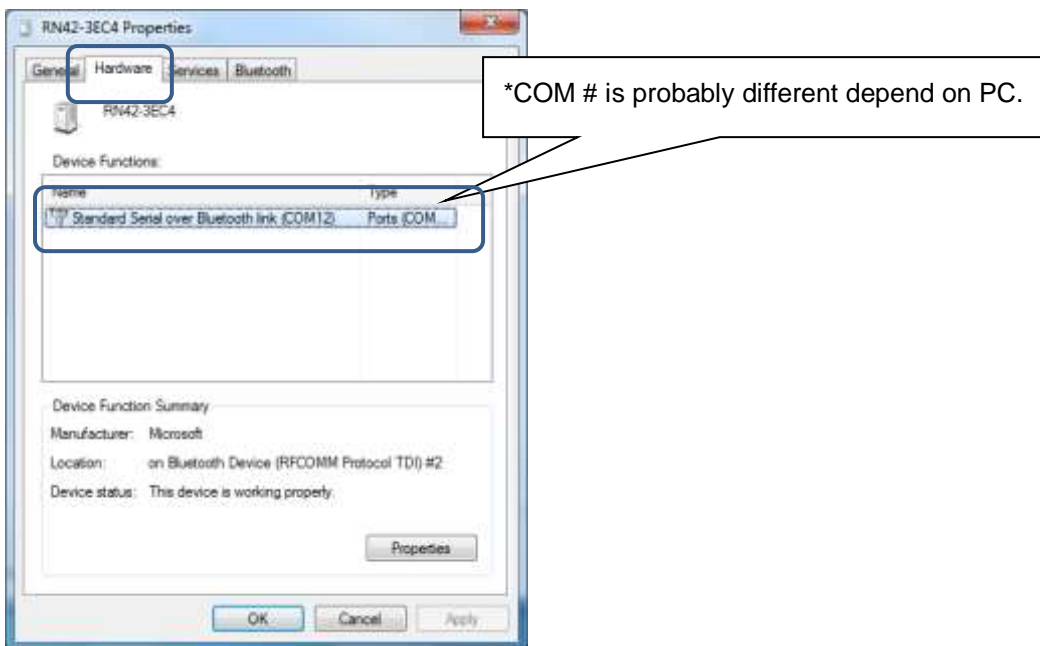
(7) When the pairing is complete, check the following box and click **Close** button.



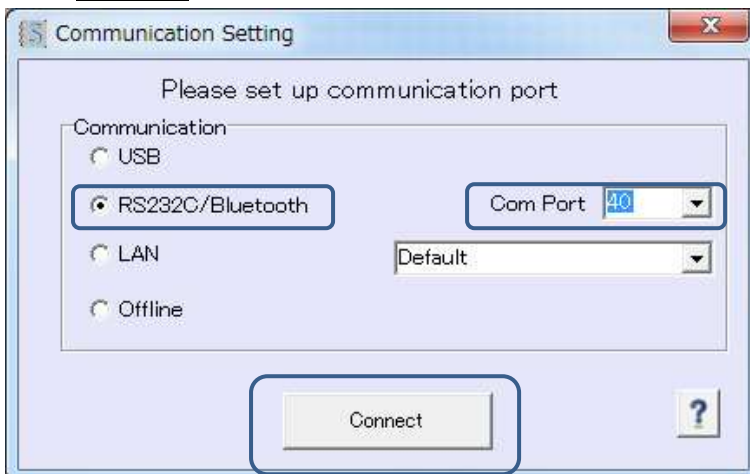
(8) For checking the com port, by right clicking on the Bluetooth device (RN42-XXXX) and go to "Properties".



(9) Select "Hardware" tab and check the Com Port.



(10) Select "RS232C/Bluetooth" communication and the Com Port by pull-down menu which was setup. Click **Connect** button.





### 3. LAN setup

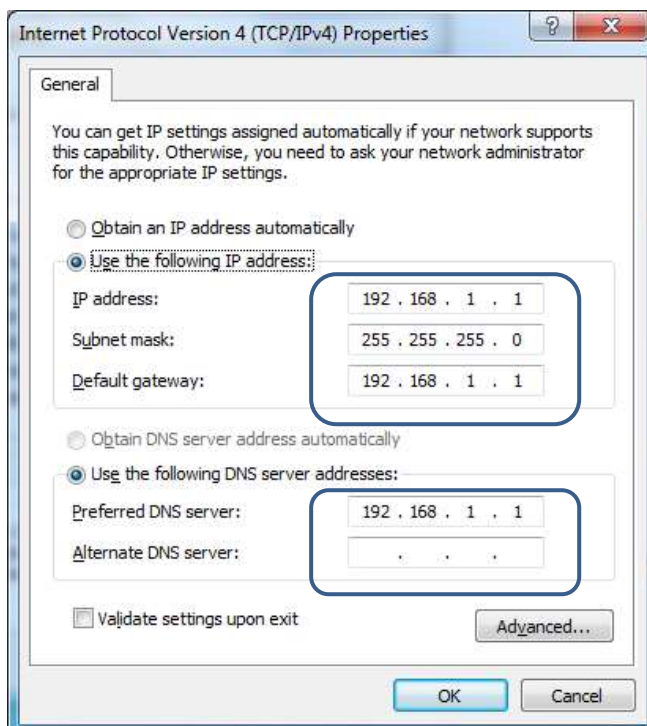
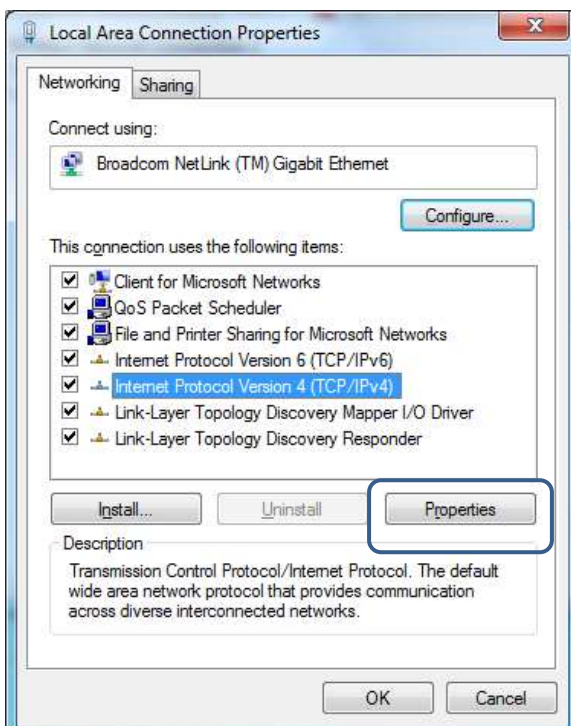
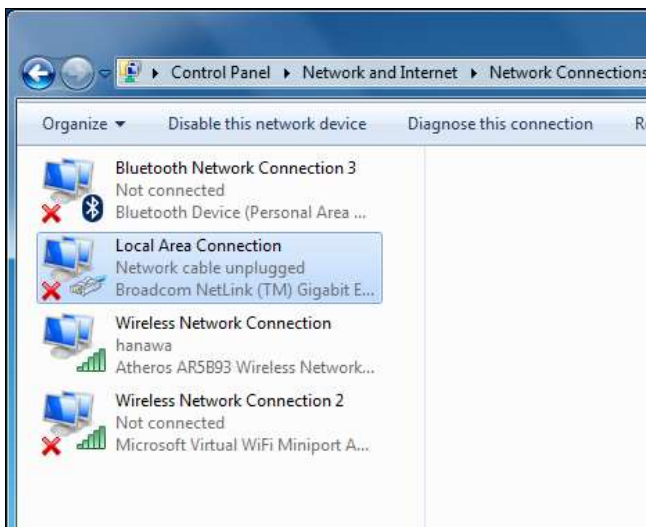
Default IP setting of MB2 is as follows.

ID	Default
IP Address	192.168.1.120
Subnet Mask	255.255.255.0
Default Gateway	192.168.1.1
Port No.	55000

#### (1) Peer to Peer connection

\*Need a cross cable depend on the PC

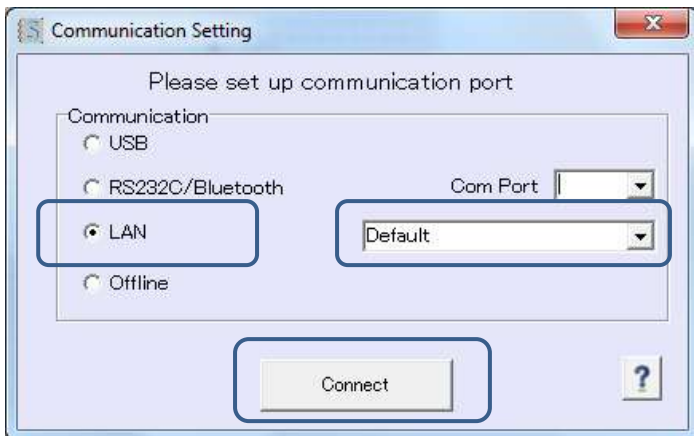
Please change as follows the TCP/IPv4 in the Local Area Connection of the PC. If you want to connect back to other networks, you may need to revert to original settings. Check with your network administrator for more information.





Connect the RJ45 Ethernet (LAN) cable between PC and MB2 after setup the TCP/IPv4.

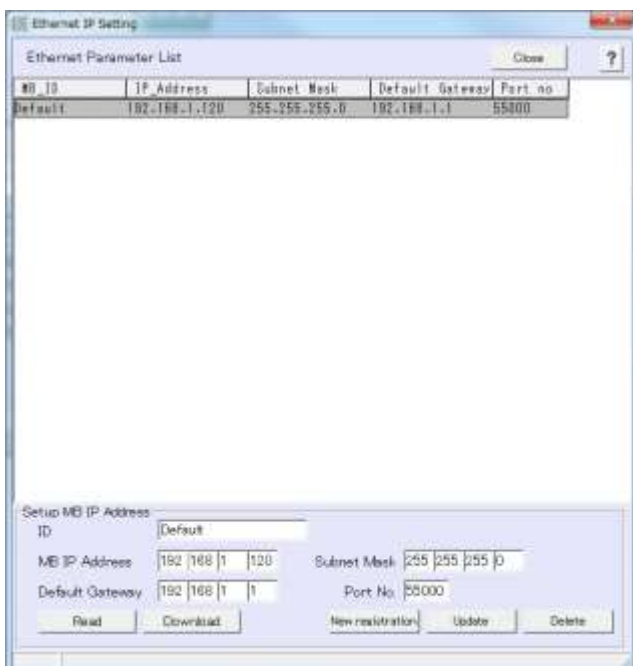
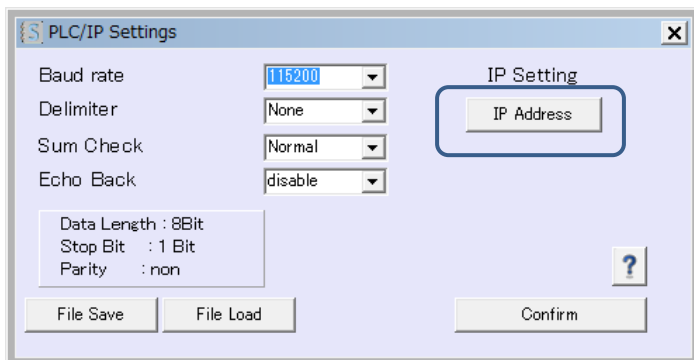
And go to “Menu” → “Settings” → “Communication” and choose “Default” by pull-down menu. Click “LAN” circle button and click **Connect** button to connect.



## (2) Network connection

Enable to setup any IP address to MB2 controller and connect to the other networks.

Go to “Menu” → “Advanced Settings” → “PLC / IP settings” → “IP Address”



Check with your network administrator in regards with the IP Address. For more information on how to set up, refer to the “4-4 Ethernet IP Settings” in the operation manual.